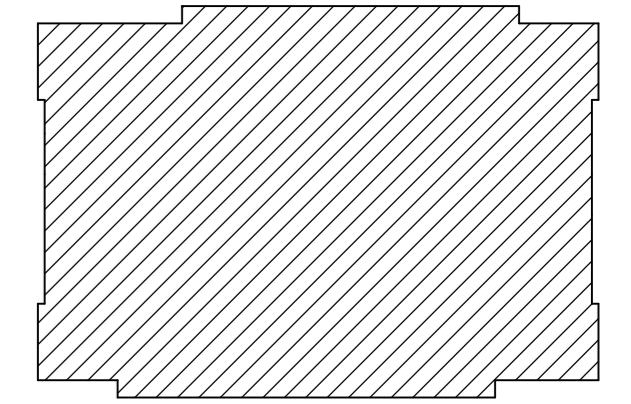
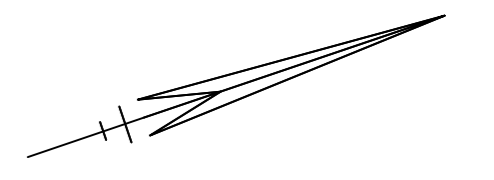
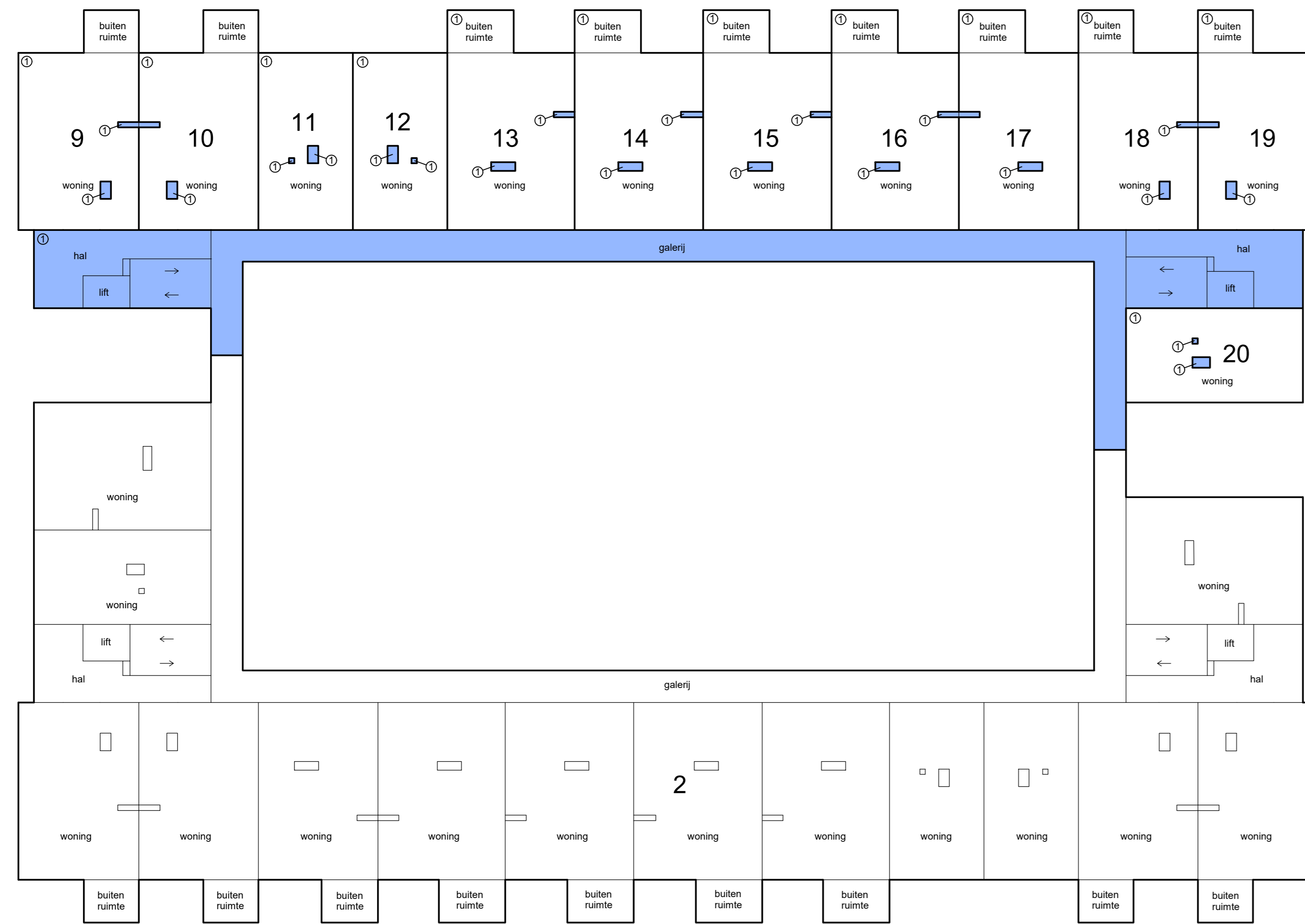


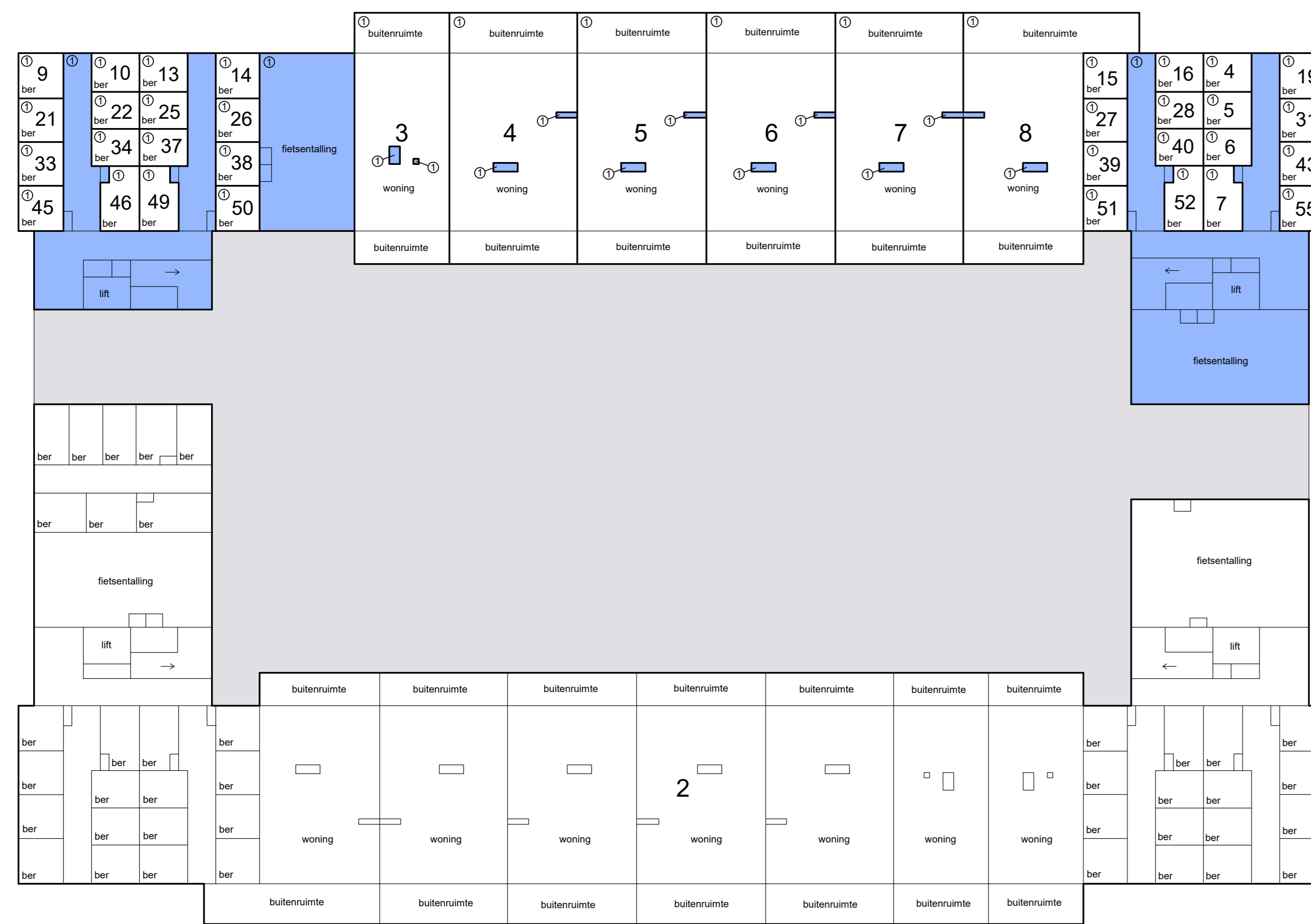
Schaal 1 : 200
 = Gemeenschappelijk hoofdsplitsing
 = Gemeenschappelijk ondersplitsing A1
 Tekening bestaat uit 2 bladen
 Blad 1



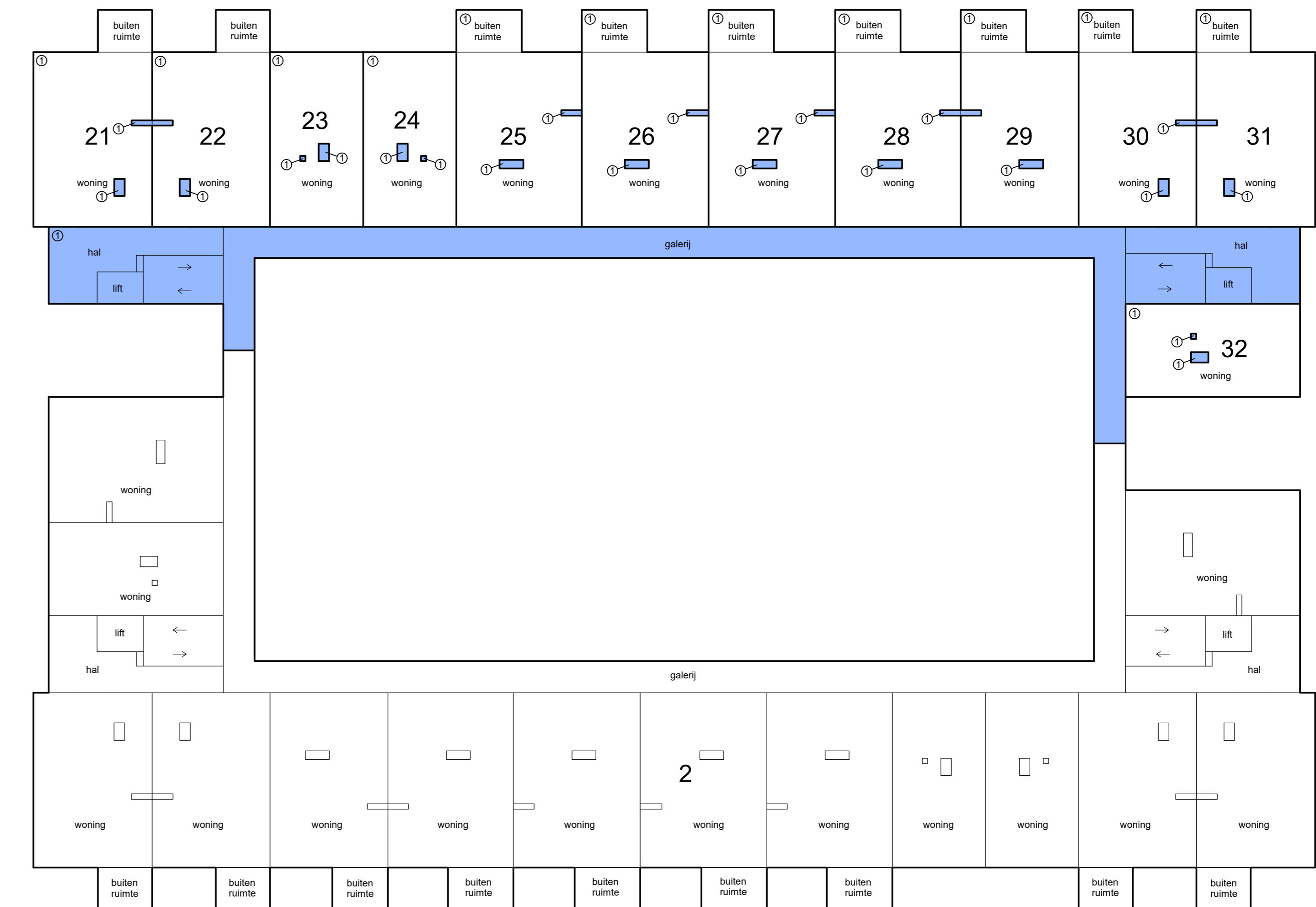
Situatie 1: 1000 Heerhugowaard



1e etage



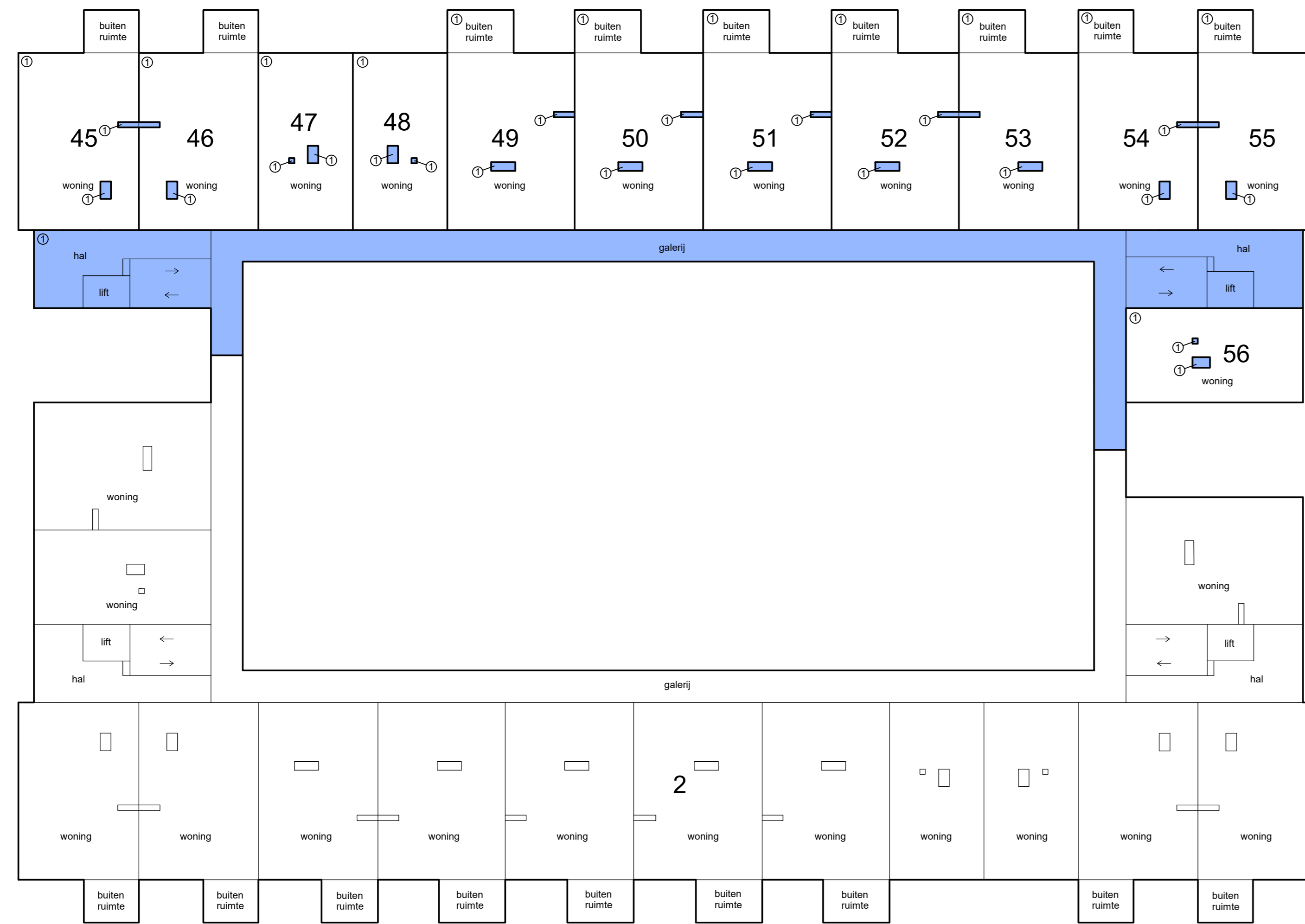
begane grond



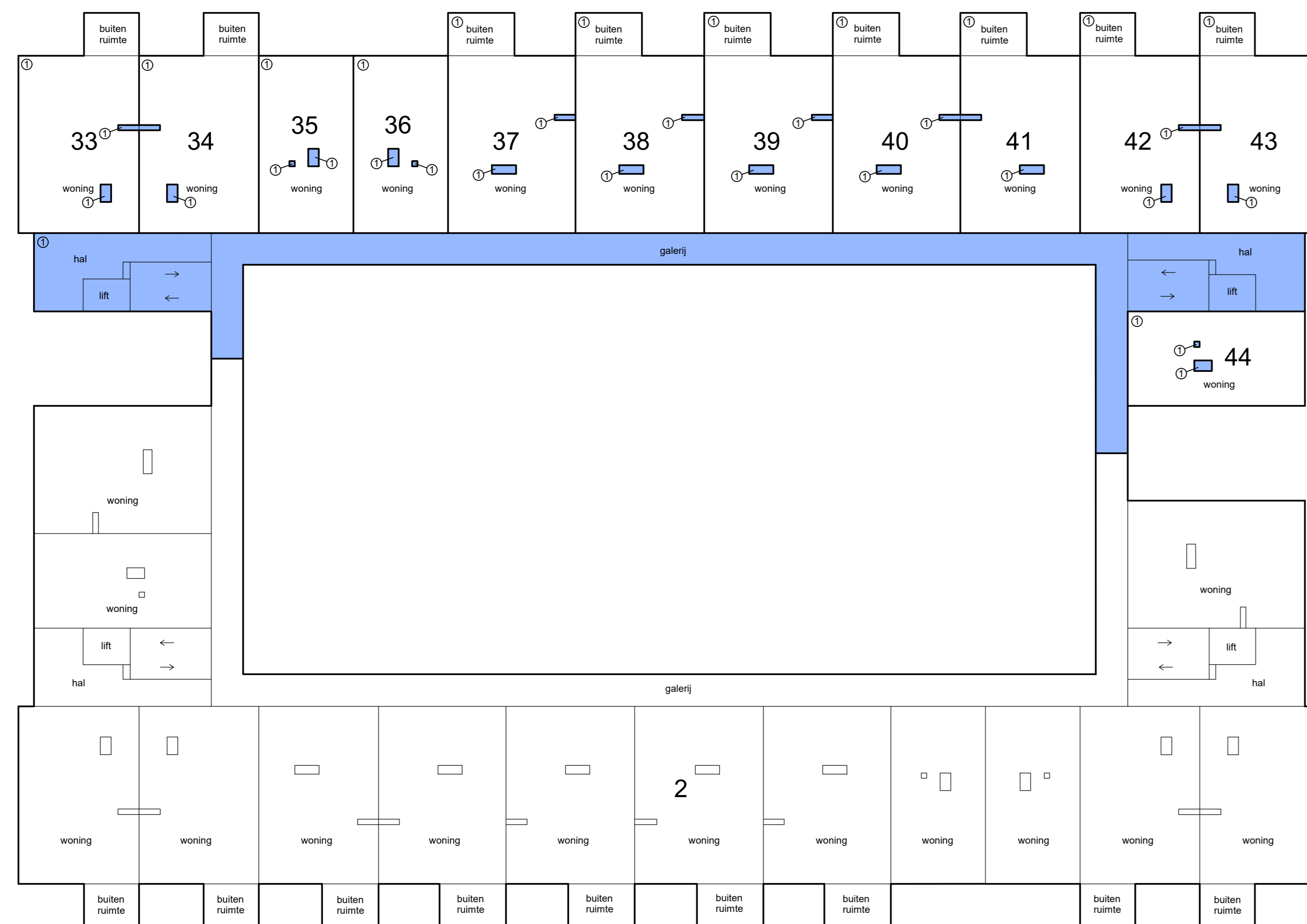
2e etage



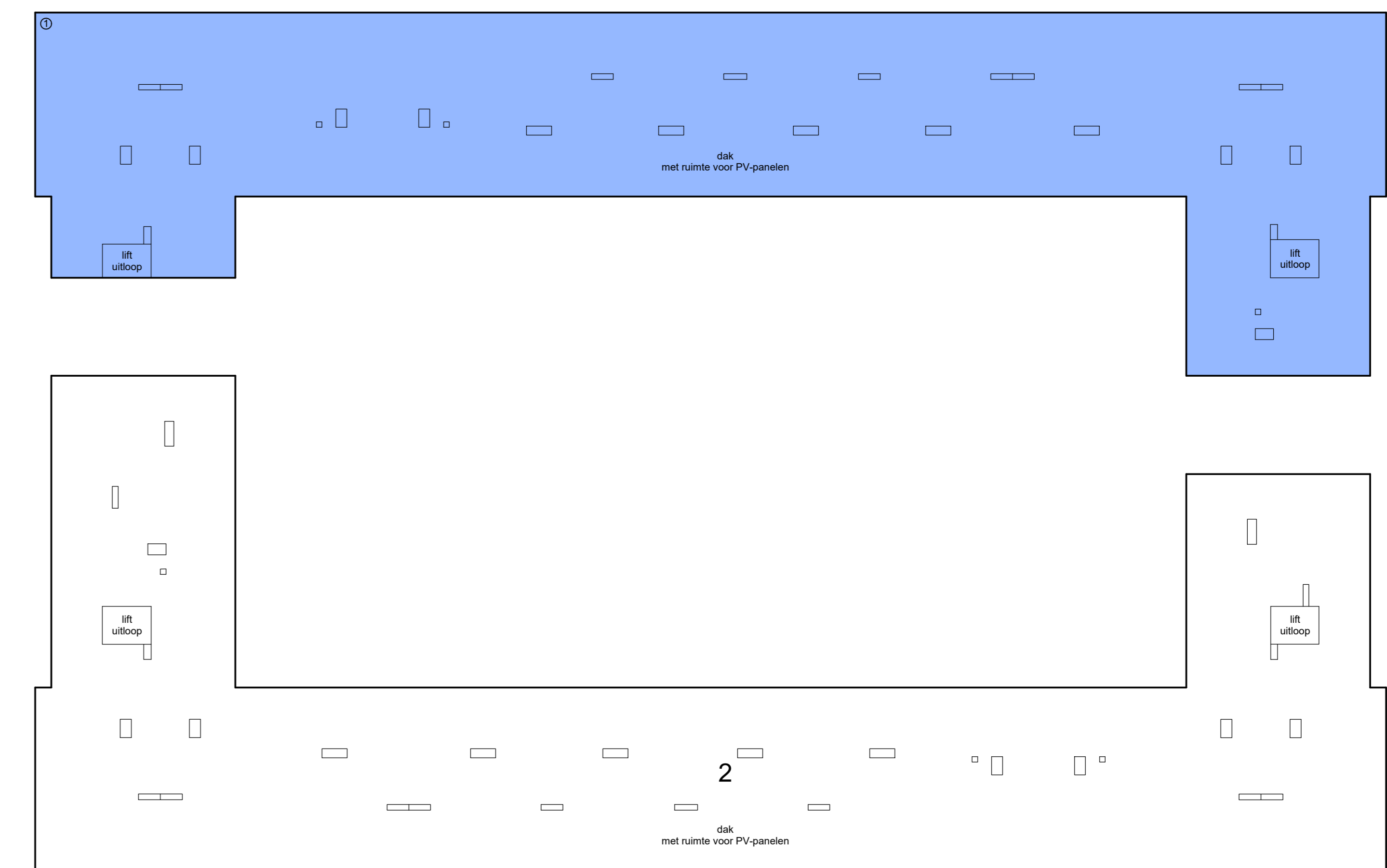
Schaal 1 : 200
 = Gemeenschappelijk hoofdsplitsing
 = Gemeenschappelijk ondersplitsing A1
 Tekening bestaat uit 2 bladen
 Blad 2



4e etage



3e etage



dak

